

**NELSON
MATHS**

**VICTORIAN
CURRICULUM**



Student Book

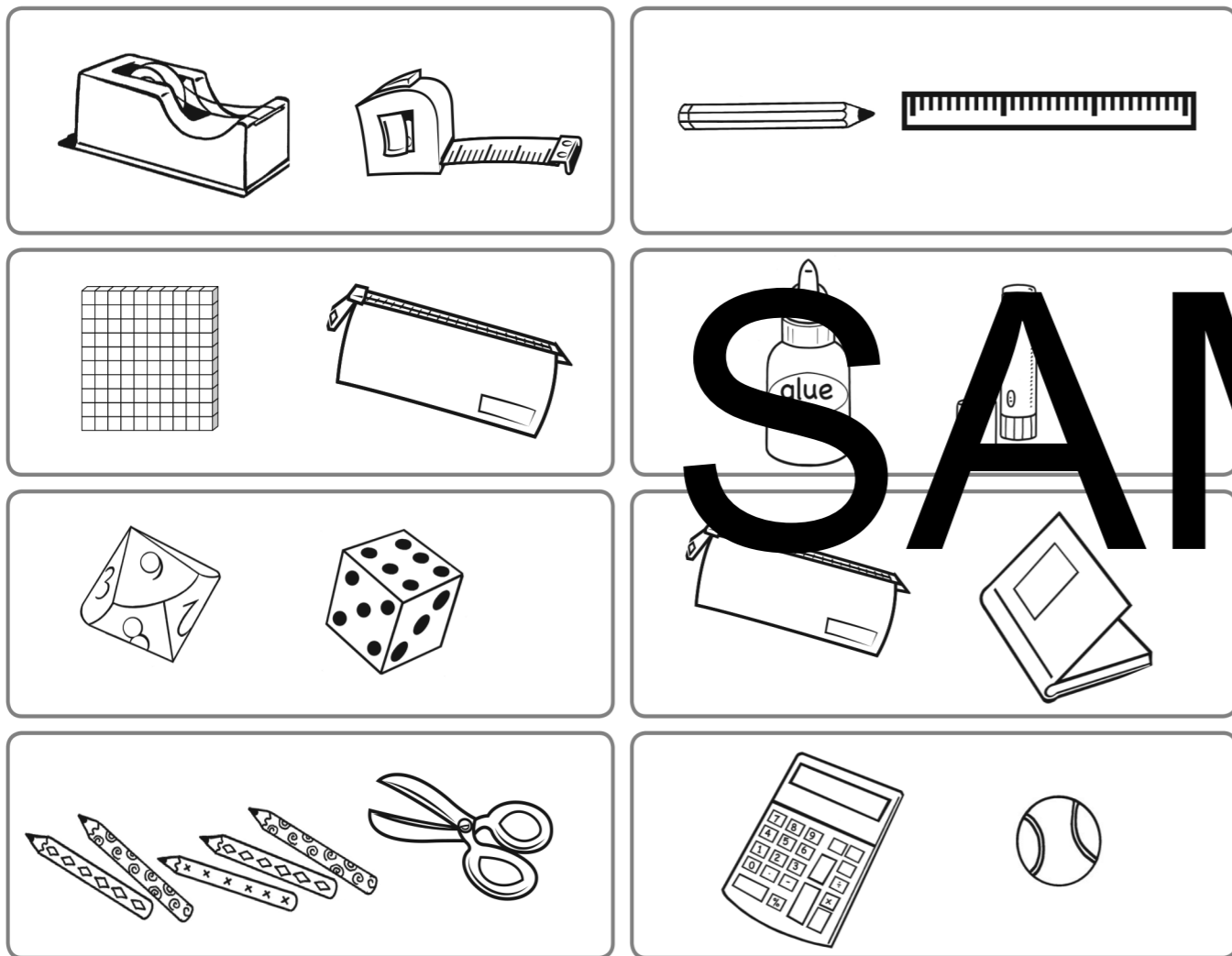
Yale Mercieca and Lauren White

Which Is Heaviest?

DATE: _____

You will need: a beam balance, classroom items shown below

- 1 Compare the two items in each group.
 - a Circle the item (or group of items) you predict will be **heaviest**.
 - b Compare the items on the beam balance.
 - c Place a tick ✓ next to your prediction if you were correct.



- 2 Find 3 things in the classroom that are **lighter than** a pencil.

- 3 Find 3 things in the classroom that are **heavier than** a stapler.

Weighing in Grams

DATE: _____

You will need: a beam balance, a set of gram weights, items below

- 1 Fill in the following table. You need to:
 - predict the order from lightest (1) to heaviest (6) by **looking**.
 - predict the order from lightest (1) to heaviest (6) by **feeling**.
 - **weigh** each item to find the actual mass (in grams).
 - number each item in order from lightest (1) to heaviest (6).

Item	Predict order by looking (1-6)	Predict order by feeling (1-6)	Actual weight (g)	Actual order (1-6)

- 2 Were your predictions from looking or feeling more accurate? Why?

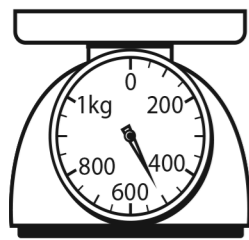
- 3 Were any of the items difficult to weigh accurately? Why?

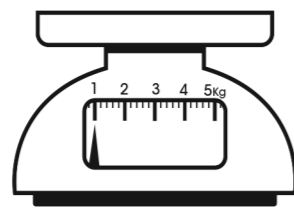
Reading and Using Scales

DATE: _____

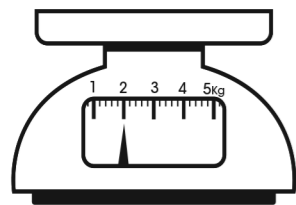
You will need: kitchen scales or a beam balance and weights, classroom items

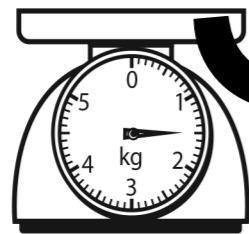
- 1 Write the mass shown on each set of scales.
- 2 Find an item (or group of items) in the classroom that matches the weight shown and draw this on the scales.

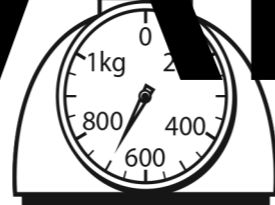


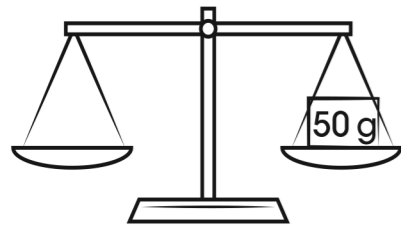


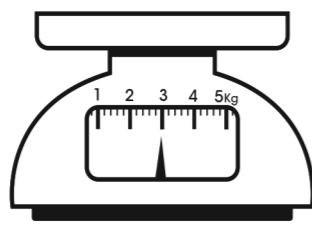


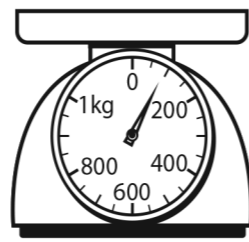












- 3 Were there any weights that were difficult to find? Why?

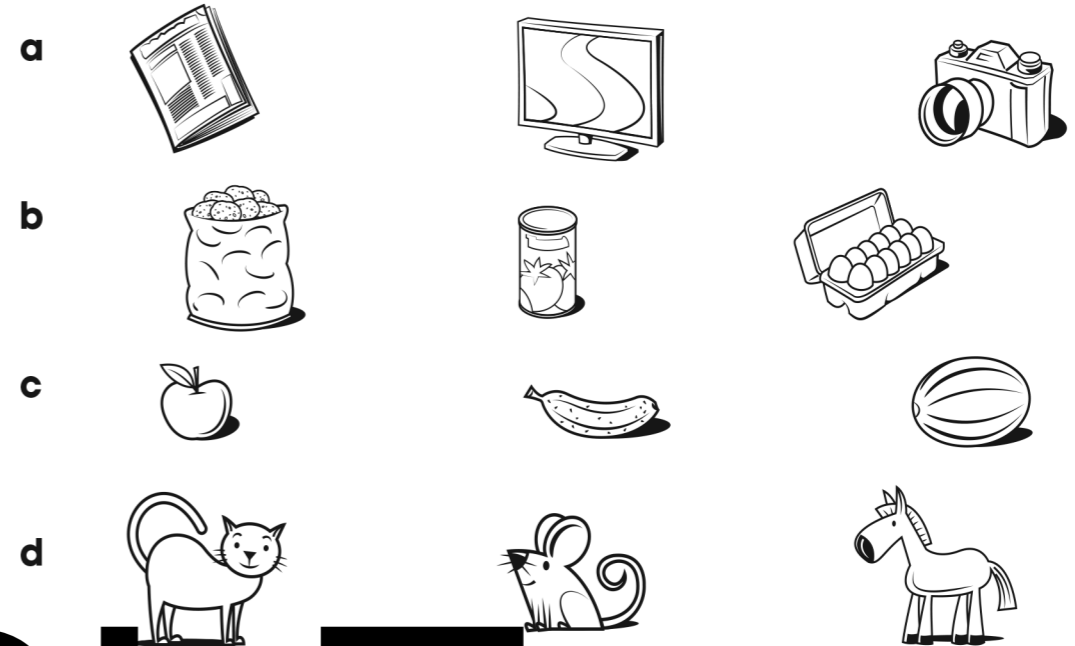
Unit

10

STUDENT ASSESSMENT

DATE: _____

- 1 Circle the **heaviest** item in each group.



- 2 Name 3 items that are measured in kilograms.

- 3 Name 3 items that are measured in grams.

- 4 Number the following items from **lightest** (1) to **heaviest** (5).



- 5 Write the mass shown on each set of scales.

